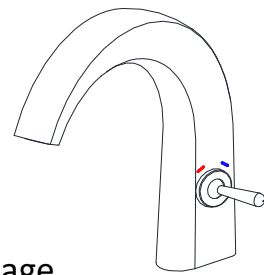




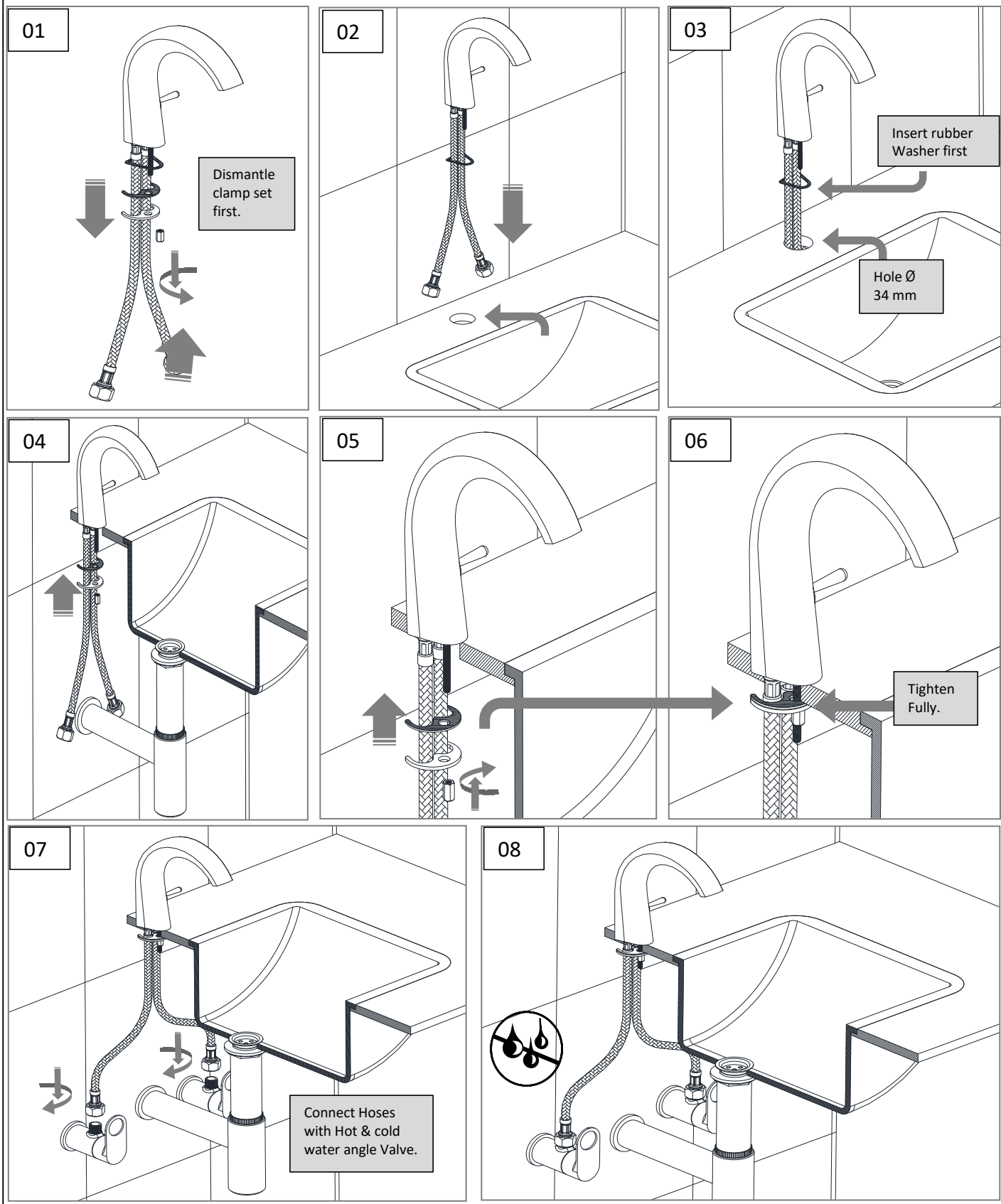
**Note: THIS INSTALLATION MANUAL CAN BE REFERRED FOR JOY STICK BASIN MIXER WITHOUT POP-UP WASTE.**

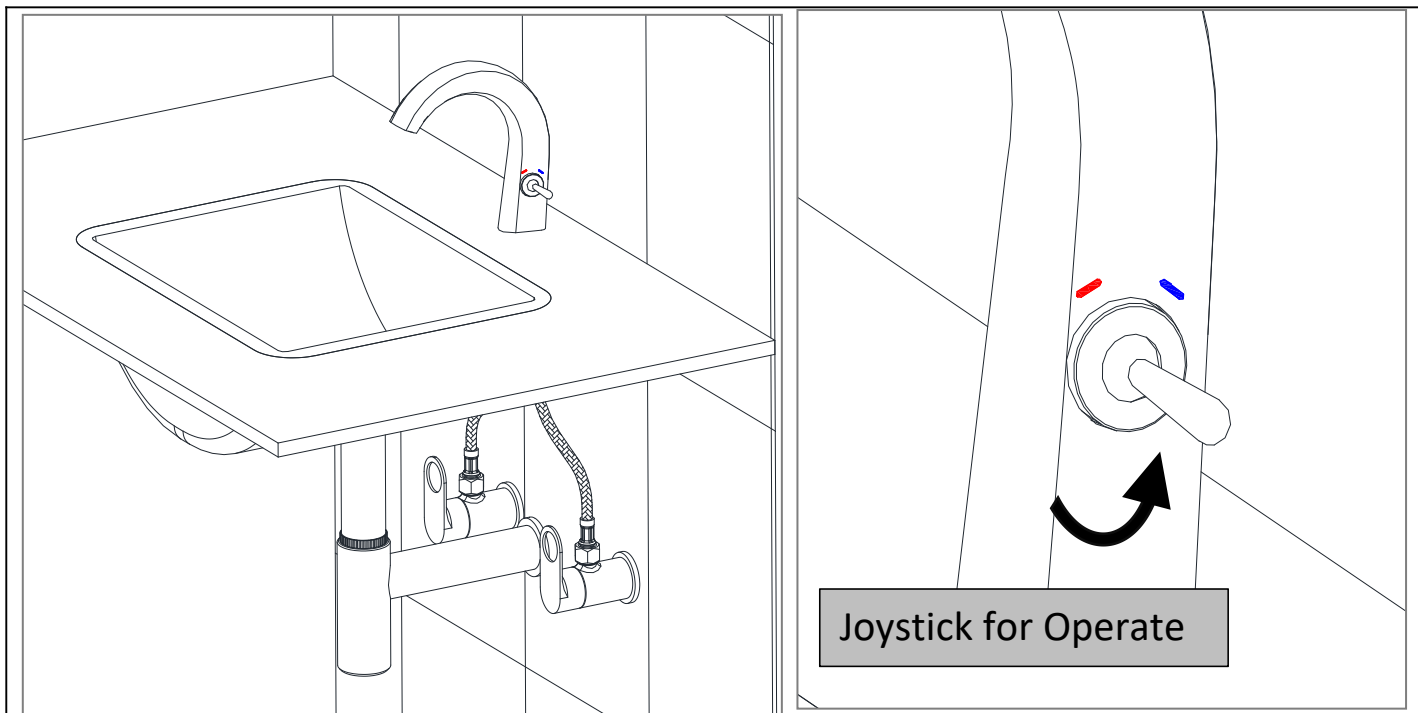


**\* Representative image**

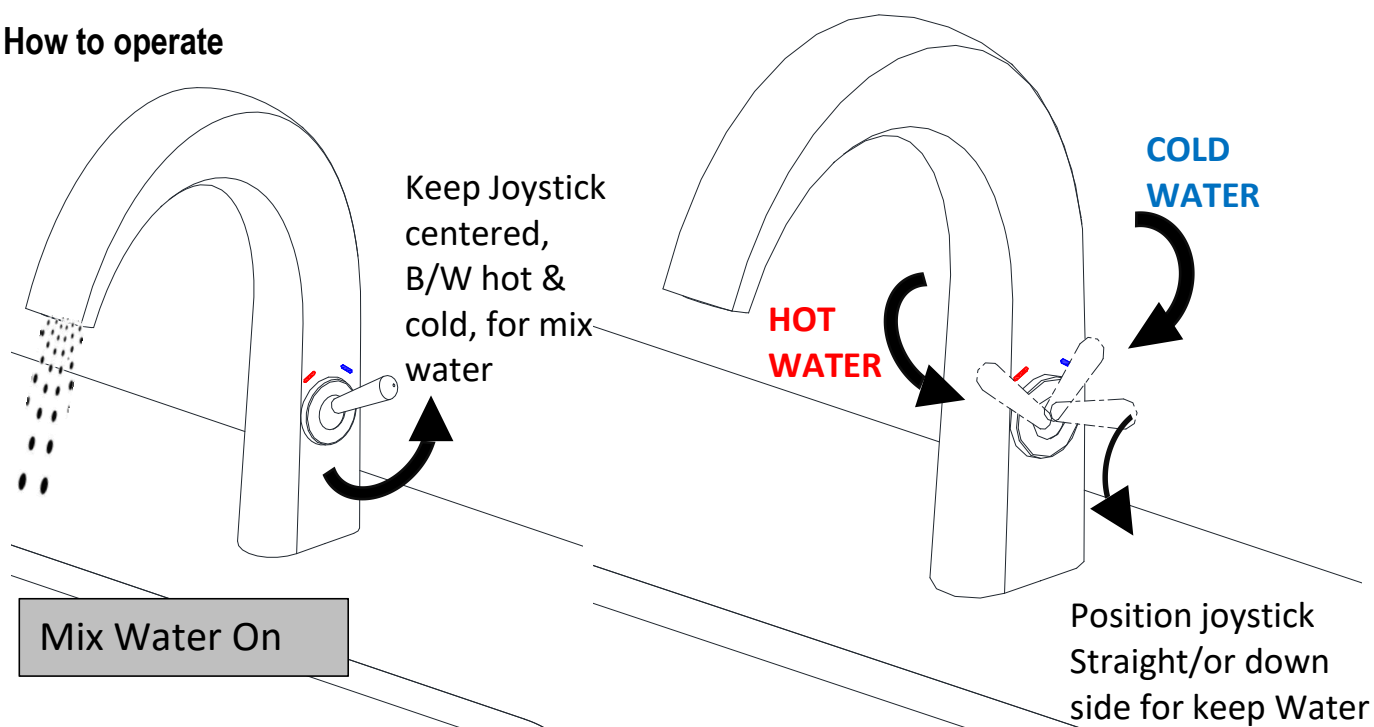
### Requirements:-

- ◆ Water line, hot & Cold.
- ◆ Wrench for fitting & tightening.





## How to operate



## Safety Tips :-

- ❖ Make sure Water off supply of during Hose connection.
- ❖ Check for Leakage, once connection is done.
- ❖ Make sure no loose fitting:
- ❖ Avoid any leakage during connection.
- ❖ Use soft cotton cloth for cleaning , don't use hard bush or scrub.

**Note: THIS INSTALLATION MANUAL CAN BE REFFERED FOR JOY STICK BASIN MIXER WITHOUT POP-UP WASTE.**



### Correct Cleaning Steps:

#### 1. Apply Liquid Soap (pH ~7):

Use a mild liquid soap (pH 5-7) or Glitz solution with a neutral water.

Spray it gently on the Outer surface of Product.

#### 2. Use a Soft Cotton Cloth:

Wipe the Product with a soft cotton cloth to remove dirt, stains, or water marks.

This prevents scratches and keeps the surface shiny.

#### 3. Rinse with Water:

Spray clean water on the fitting after wiping with soap.

This helps remove any soap residue.

#### 4. Final Wipe with Soft Cotton Cloth:

Again, wipe with a soft cotton cloth to dry the fitting.

This ensures no water spots are left.

For Non  
Chrome  
Surface

For  
Chrome  
Surface



### ✗ Don'ts (Avoid These):

Don't use Powder Soap:

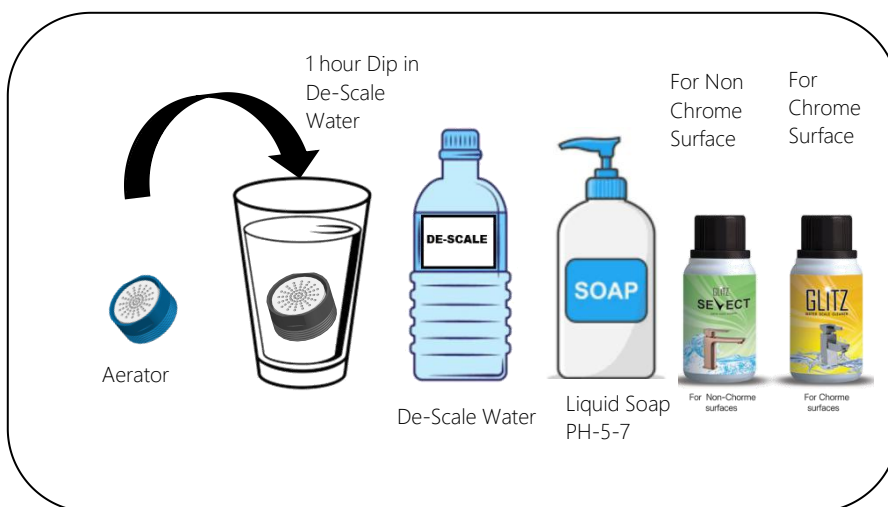
It can be abrasive and scratch the fitting surface.

Don't use Scrubbing Pads:

Scrubbing with rough materials can damage the finish and reduce shine.

**Recommended Cleaning:-  
Twice in a Week.**

### Steps & Cleaning agents requirements for Cleaning.



**Note: THIS INSTALLATION MANUAL CAN BE REFFERED FOR JOY STICK BASIN MIXER WITHOUT POP-UP WASTE.**