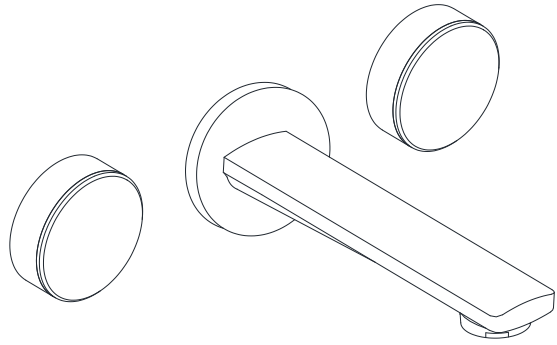




### Exposed Part Kit of In-wall 3-Hole Basin Mixer with Basin Spout



\* Representative image

### Temp & water pressure Requirement.

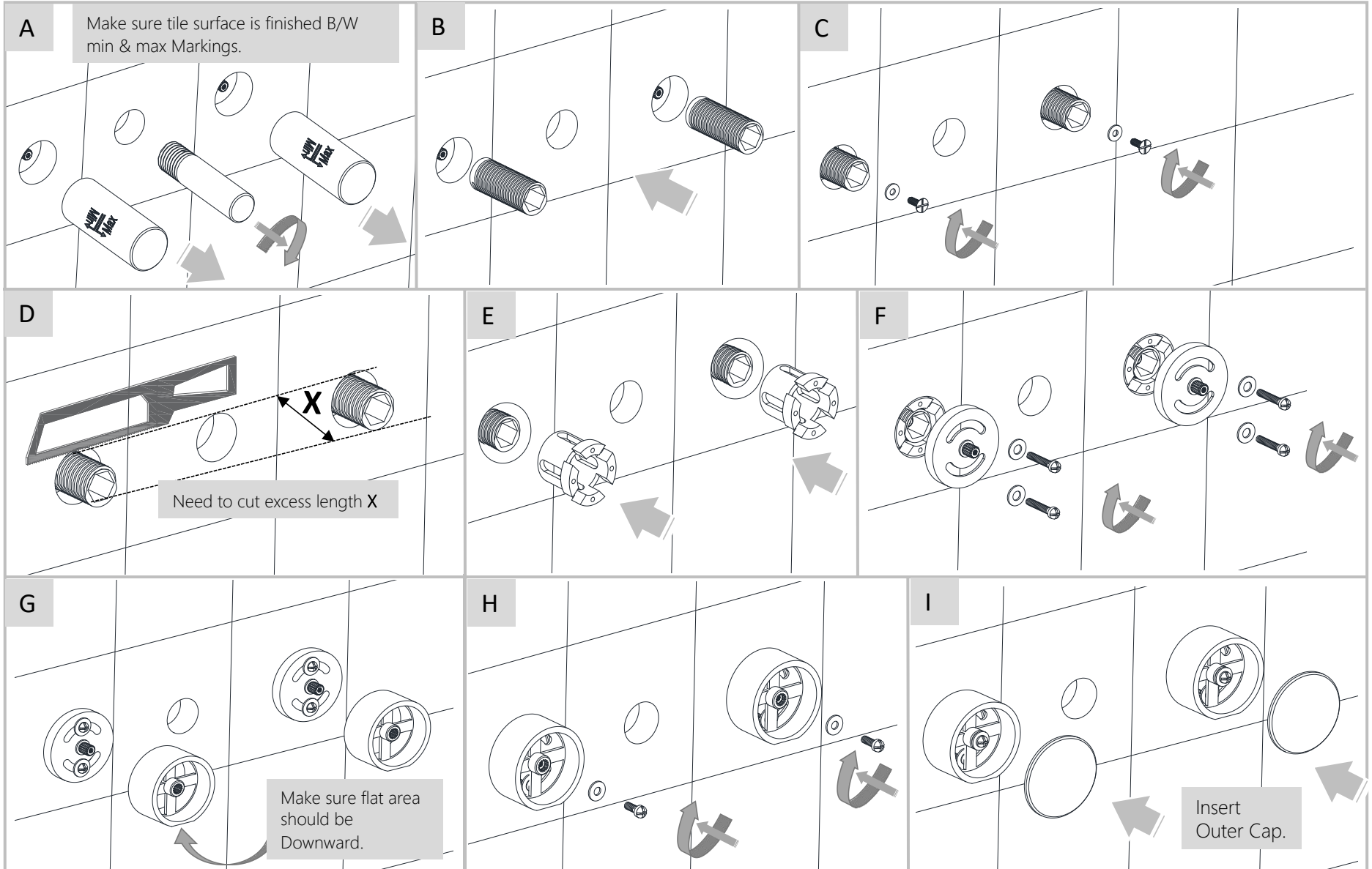


Working Pressure: 1~3 bar

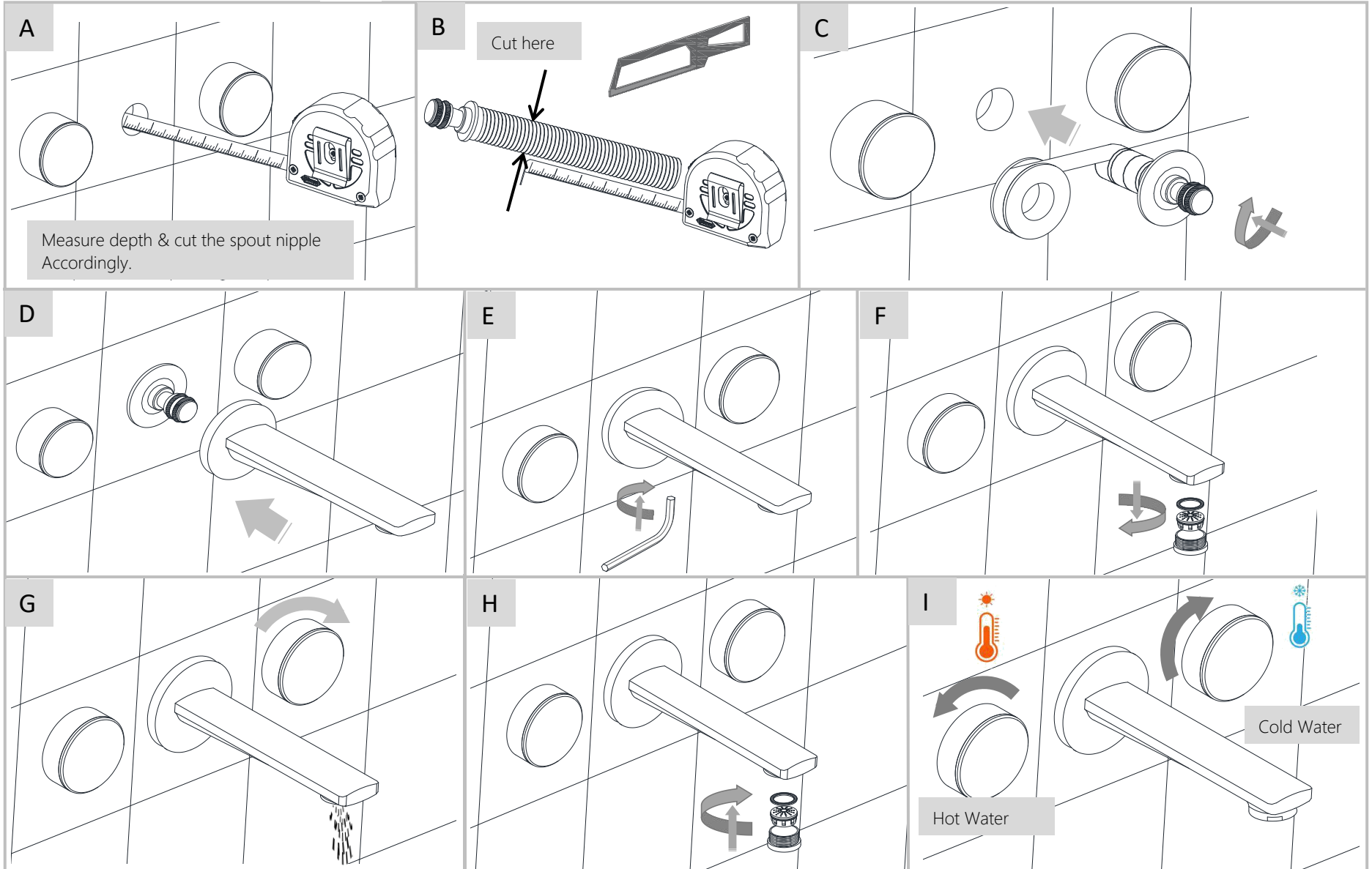


Required Temperature: 5-65°C

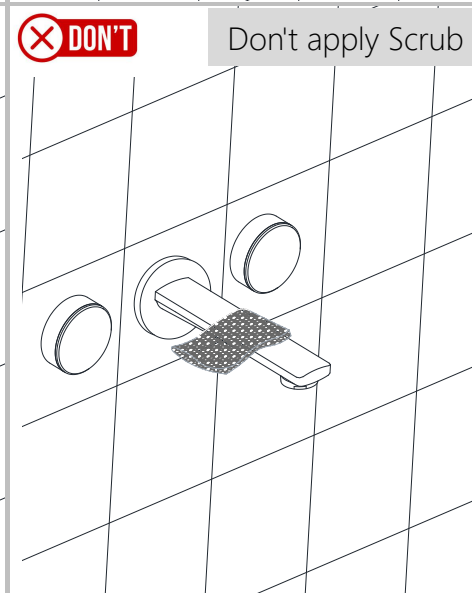
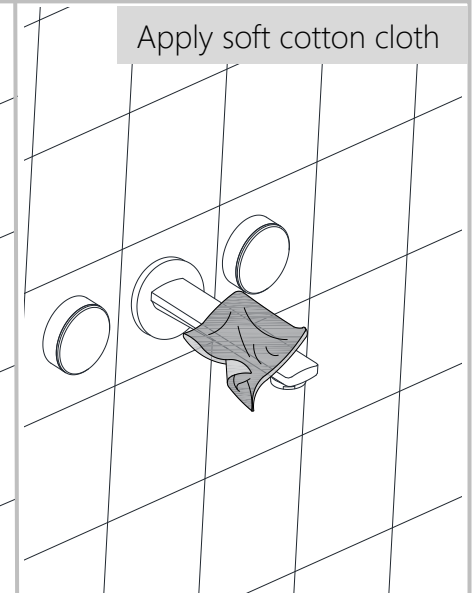
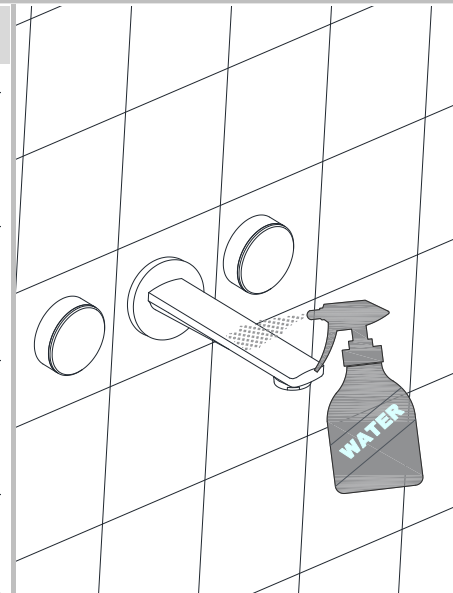
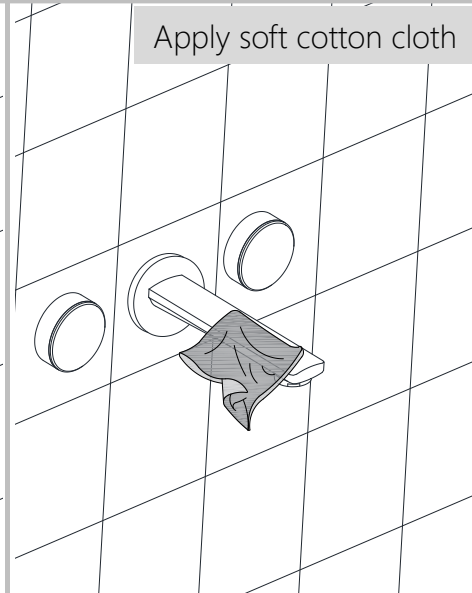
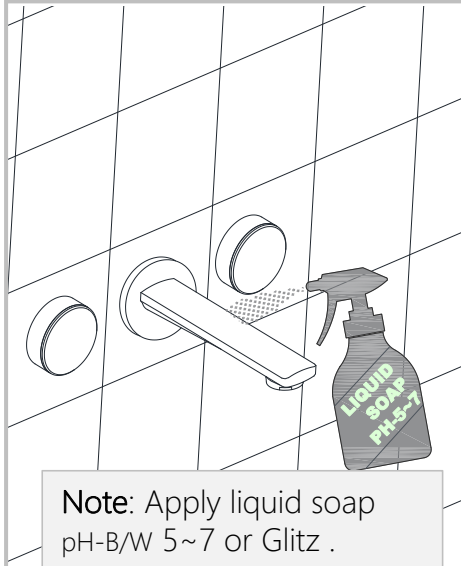
- **Working Pressure:-**The water pressure should be Between 1 and 3 bar for proper functioning.
- **Required Temperature:-** The water temperature within the range of 5-65° for safe & effective use.
- **Note:-** These are recommended values for achieving conventional /Optimum output.



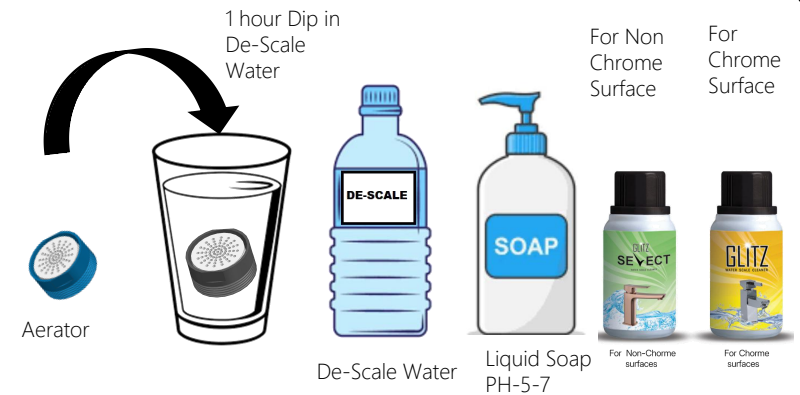
Note: THIS INSTALLATION MANUAL CAN BE REFERRED FOR ALL EXPOSED PART KIT N WALL 3-HOLE BASIN MIXER WITH BASIN SPOUT.



Note: THIS INSTALLATION MANUAL CAN BE REFERRED FOR ALL EXPOSED PART KIT N WALL 3-HOLE BASIN MIXER WITH BASIN SPOUT.



### Steps & Cleaning agents requirements for Cleaning.



Recommended Cleaning:-Twice a week.