

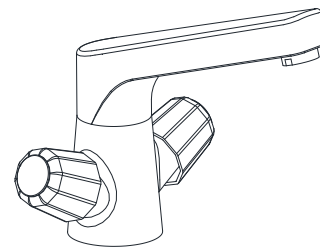


INSTALLATION GUIDE

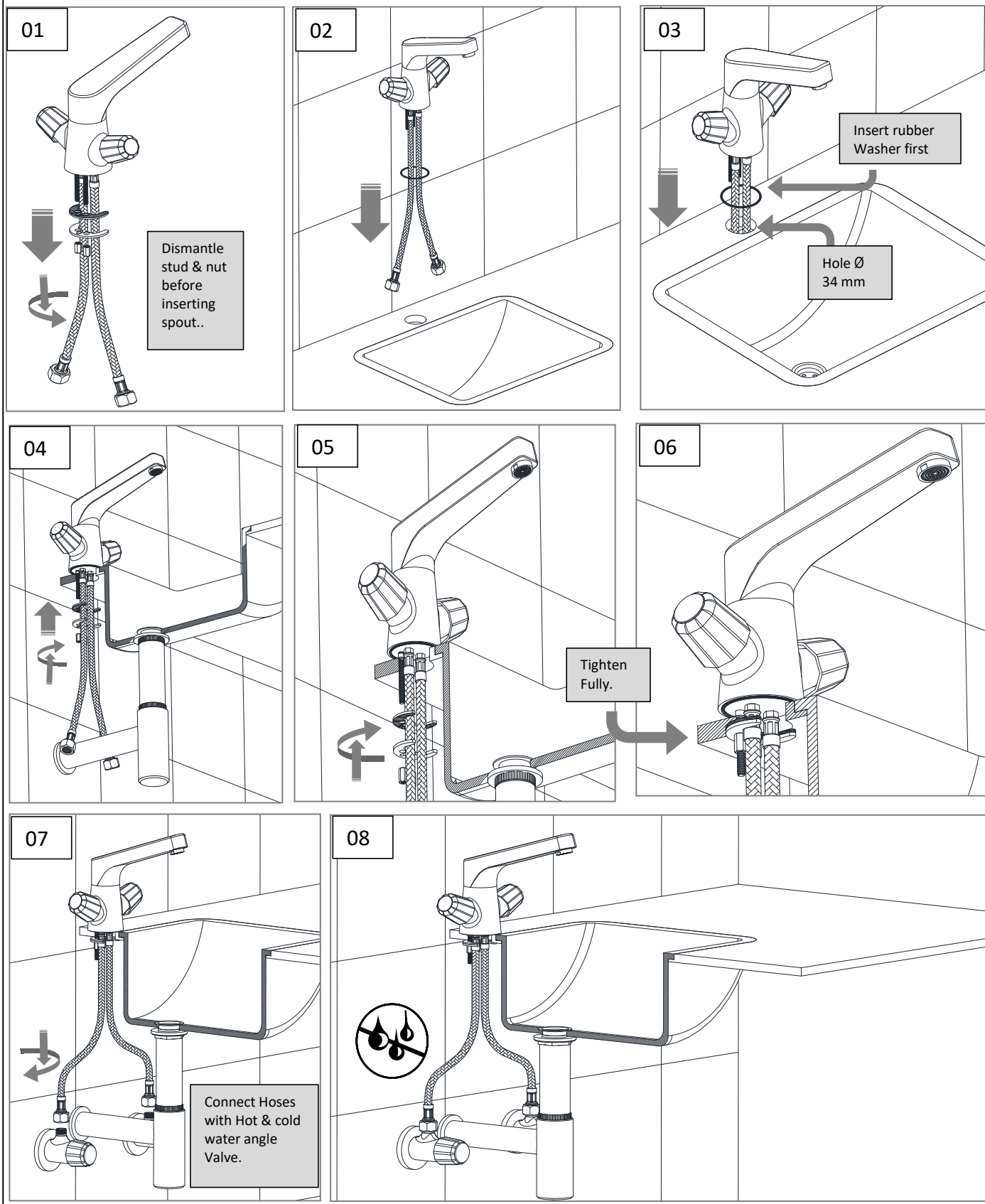
**NOTE: THIS INSTALLATION MANUAL
CAN BE REFERRED FOR ALL
CENTRAL HOLE BASIN MIXER
WITHOUT POP-UP.**

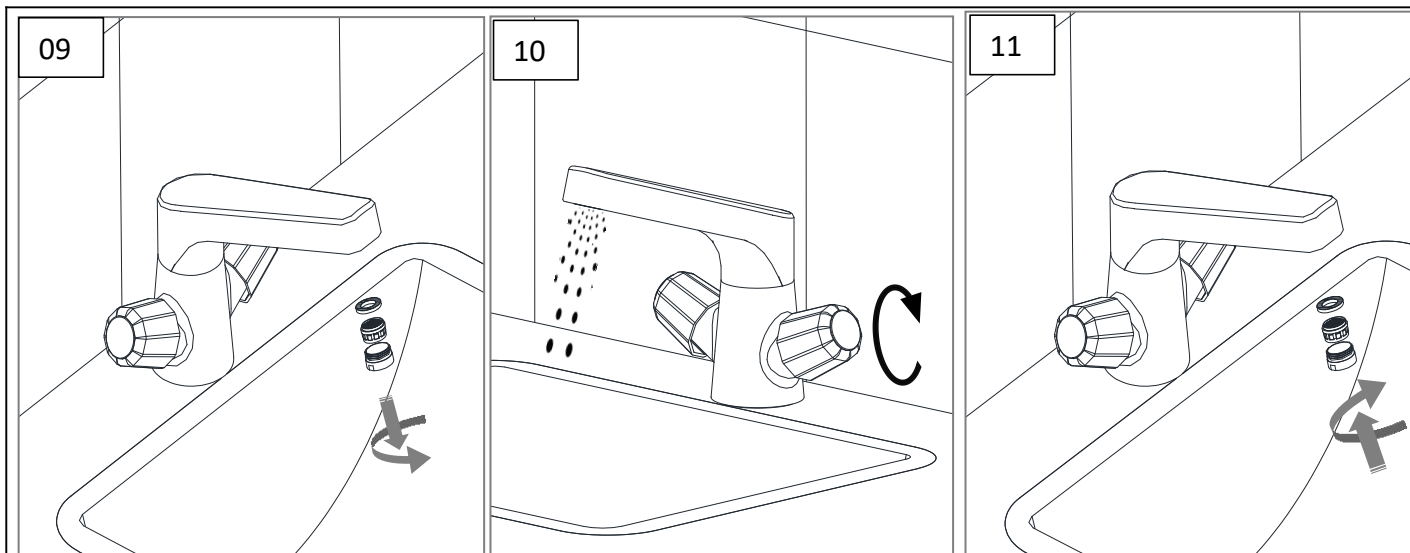
Requirements:-

- ◆ Water line, hot & Cold.
- ◆ Wrench for fitting & tightening.

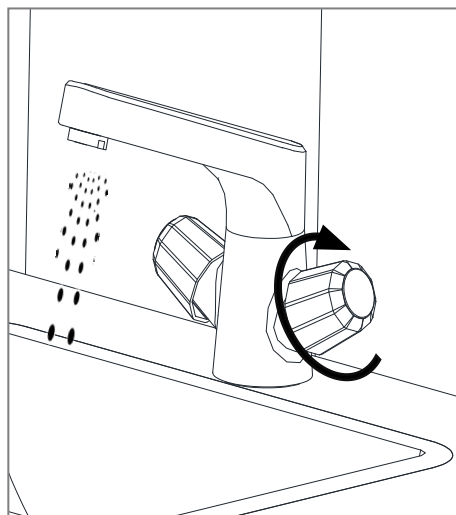
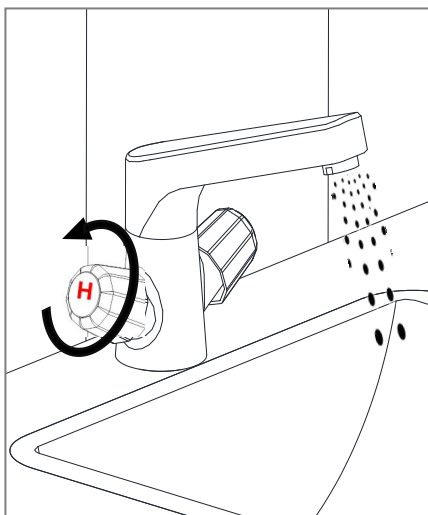


* Representative image





How to operate



NOTE: THIS INSTALLATION MANUAL CAN BE REFERRED FOR ALL CENTRAL HOLE BASIN MIXER WITHOUT POP-UP.

HOT Water On

COLD Water On



Correct Cleaning Steps:

1. Apply Liquid Soap (pH ~7):

Use a mild liquid soap (pH 5-7) or Glitz solution with a neutral water. Spray it gently on the Outer surface of Product.

2. Use a Soft Cotton Cloth:

Wipe the Product with a soft cotton cloth to remove dirt, stains, or water marks. This prevents scratches and keeps the surface shiny.

3. Rinse with Water:

Spray clean water on the fitting after wiping with soap. This helps remove any soap residue.

4. Final Wipe with Soft Cotton Cloth:

Again, wipe with a soft cotton cloth to dry the fitting. This ensures no water spots are left.

✗ Don'ts (Avoid These):

Don't use Powder Soap:
It can be abrasive and scratch the fitting surface.

Don't use Scrubbing Pads:
Scrubbing with rough materials can damage the finish and reduce shine.

Safety Tips :-

- ❖ Make sure Water supply off during Hose connection.
- ❖ Check for Leakage, once connection is done.
- ❖ Make sure no loose fitting:
- ❖ Avoid any leakage during connection.
- ❖ Use soft cotton cloth with water or Glitz for cleaning.
- ❖ don't use hard brush or scrub.

For Non
Chrome
Surface



For
Chrome
Surface



*** Recommended cleaning:-
Twice in week**