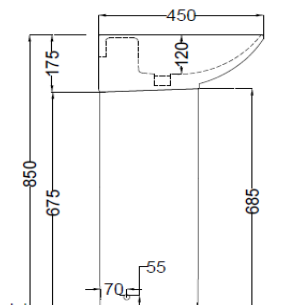
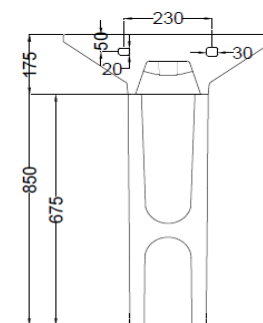


TOP VIEW



SIDE VIEW



BACK VIEW

#### General Information

Product Code	LAS-WHT-91807+LAS-WHT-91301
Brand	Jaquar
Colour	White
Type	Wall Hung Basin with full pedestal
Material	Fine Fire Clay

#### Product Specification

Product Dimension	600x450x175 mm, Pedestal Size: 200x265x685 mm
Basin Inner Dimension	500x340x120 mm
Product Net Weight	Basin 15. kg. pedestal 12 kg
Product Gross Weight	Basin 16.25 kg pedestal 12.5 kg
Packaging Dimension	Basin 510X200X460 mm Pedestal 700X210X275 mm
Outlet	Vertical
Inlet hole And Outlet Hole Dimension	Tap hole dia. $\varnothing 35 \pm 2$ mm
	Internal diameter of outlet hole dia. $\varnothing 45 +2/-1$ mm
	Horizontal distance between the centre line of the tap hole and the centre line of the waste outlet hole $\leq 115$ mm
Product Feature	Exclusive design, Rectangular shape, Basin with tap hole, with fixing rag bolt , Anti germ glazed

#### ACCESSORIES INCLUDED

Rag bolt	ZPS-MST-RB03
----------	--------------

#### ACCESSORIES RECOMMENDATION

Pedestal	LAS-WHT-91301
----------	---------------

#### CARE AND CLEANING GUIDELINES

- Vitreous china sanitary ware products are fragile in nature and need to be handled with care (to avoid personal injury) at all times during its storage, handling, installation and use thereafter.
- The product is heavy and it is recommended that two persons hold it while it is being fixed.
- Carefully inspect the new product for damage before installation.
- Risk of product damage. Over tightening may cause breakage or chipping of vitreous china.
- Risk of external leakage. Do not lift or rock the bowl after placement.
- Always test your cleaning solution on an inconspicuous area on the product before applying it to the entire surface.
- Do not allow cleaners to sit or soak on the product.
- Use a soft, dampened sponge or cloth to clean. Never use abrasive material like a bristle brush or scouring pad.
- Wipe surfaces clean and rinse completely with water immediately after applying cleaners.
- Clean Chrome, stainless steel surfaces once a week. Do not use cleaners containing chloride on chrome, stainless steel. If used, rinse the surface immediately to prevent corrosion.
- Wherever chrome plating is used on the products, use only warm water to clean and then dry with a soft cloth.

#### QUALITY MANAGEMENT SYSTEM - ISO 9001



DISCLAIMER: Our every effort has been made to ensure factual accuracy, the information presented subject to changes due to requirements in different sites, markets and/ or countries. All dimensions are in mm (Tolerance  $\pm 5$  MM). Jaquar reserves the right to make the necessary amendments at any time without prior notice.

# For Installation Refer Actual Product