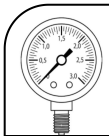
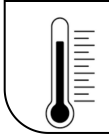




## TEMP.& WATER PRESSURE REQUIREMENTS



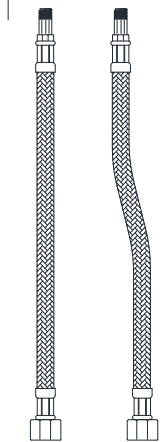
Required Pressure: 1~5 bar



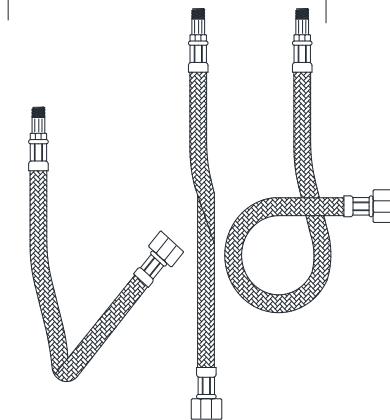
Required Temperature: 5-65°C

Note: Above are the recommended values for getting Conventional Output.

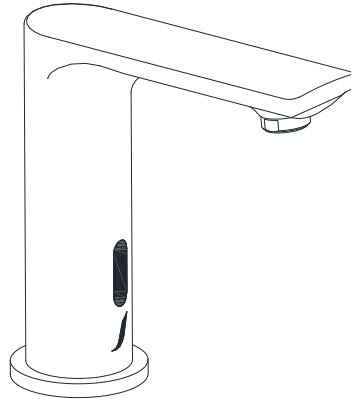
DO ✓



DON'T ✗



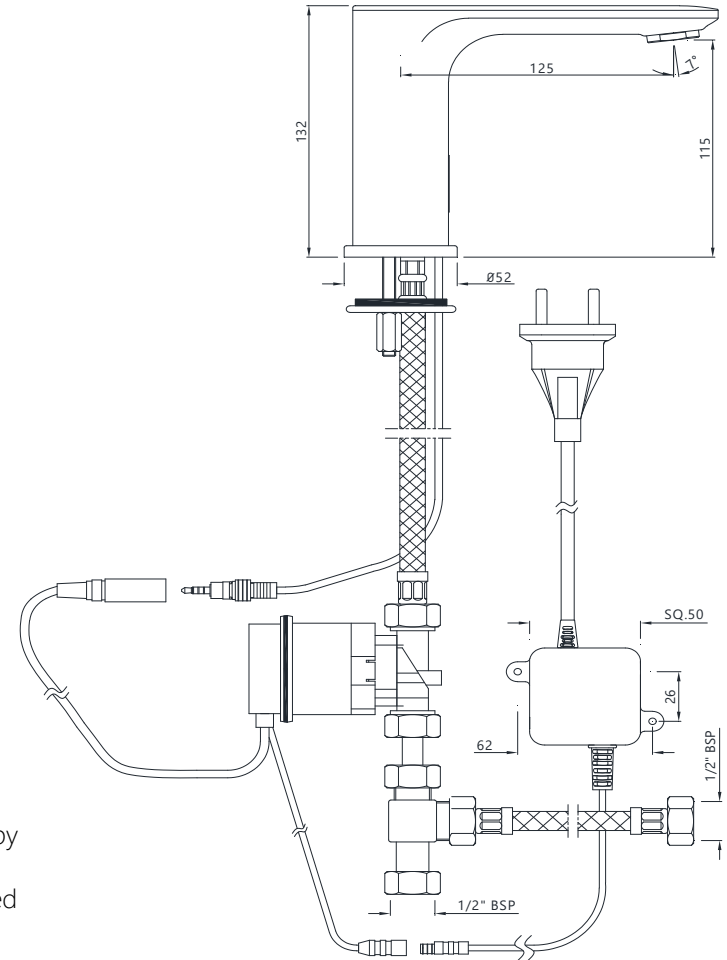
## SNR-91019EBPK



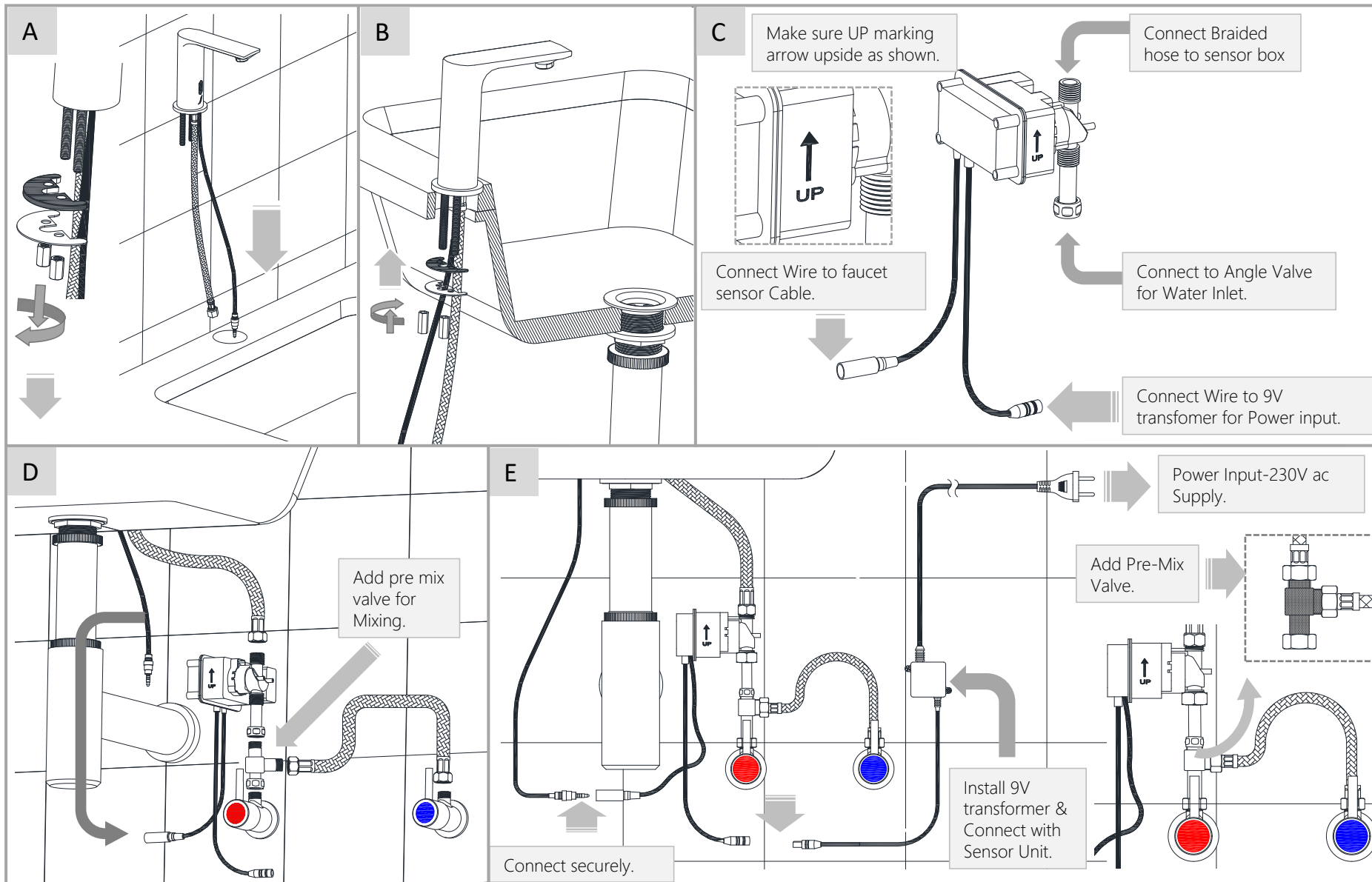
### NOTE:

1. Do not install the faucet facing a mirror or any other electronic system operated an infra-red sensor.
2. To prevent reflection problem, it is recommended to keep a minimum distance of 1.5 meters b/w faucet & Other Items.
3. This product should only be fitted by a qualified/certified plumber and should not installed by a non-qualified person.

## TECHNICAL DRAWING

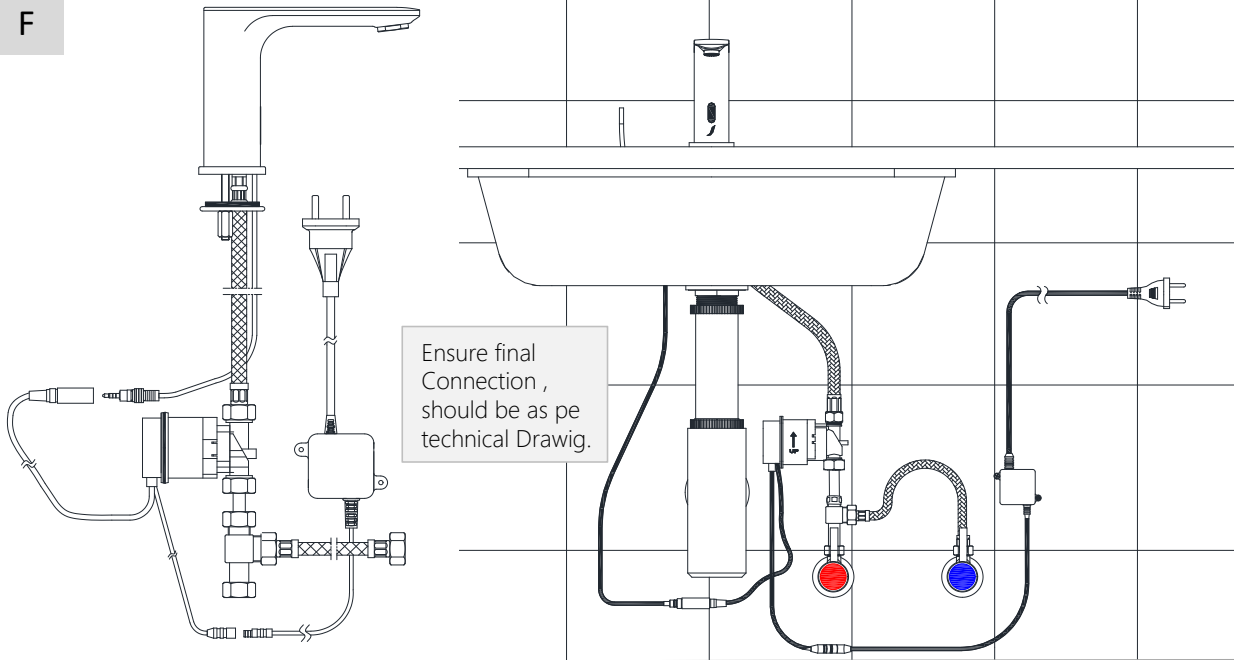


Note: This Installation method can be referred for SNR-CHR-91017EBPK , Technical drawing will be different for SNR-CHR-91017EBPK .





F



### SETTING OF SENSOR RANGE BY Hand Gesture

**IMORTANT:** If needed, setting adjustment can be done by Hand Gesture

SETTING OF SENSOR RANGE and Valve Shut off Time BY Hand Gesture

**Step1** - Use a plain white sheet 15X15 cm and kept around 5 cm in front from sensor and contentiously kept up to desired exit time as mention below steps

**Step2** - Red LED blink and Water start Dispensing.

**Step 3** - After 12-13 Seconds water automatic stop (Security Time)

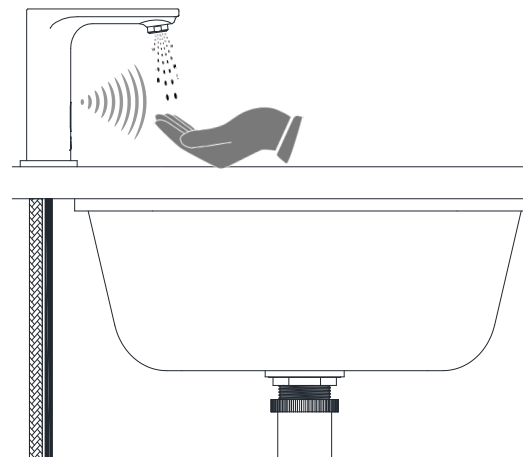
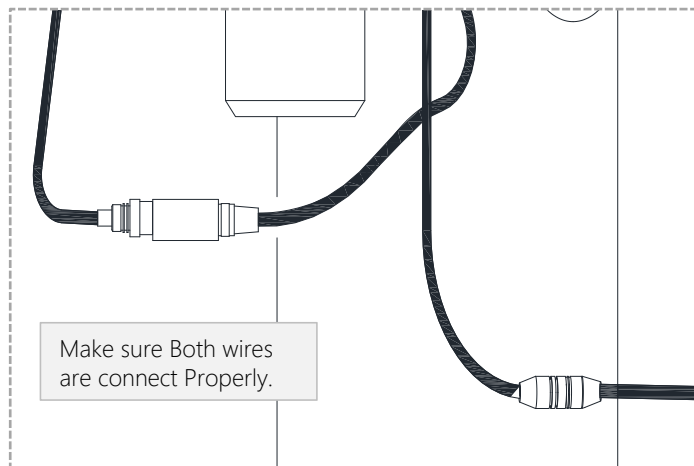
**\*\*\*Initiate Configuration Mode\*\*\***

**Step 4** - After 10 seconds of Step-3 RED Led Glow if we want to increase range >15-22 cm, remove Paper from Sensor. And exit (Total Time 22-25 seconds)

**Step 4a** - After 10 seconds again RED LED Glow if we want to set shut off valve time 4-5 seconds and remove paper from Sensor. And Exit (Total Time 35-37 seconds)

**Step4b** - After further 10 seconds again RED LED Glow and here if we remove paper its go to Factory Default Range (10cm - 15cm). (Total White Paper Kept at Sensor = 42-45 seconds)

**Step4c** - After further 10 seconds again RED LED Glow and here if we remove paper its go to Factory Default Shut off valve time (2-3 sec.). (Total White Paper Kept at Sensor = 42-45 seconds)

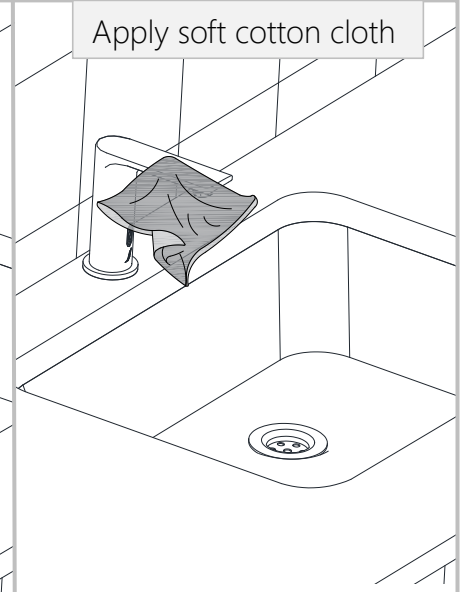




Apply soft cotton cloth



Apply soft cotton cloth



**✗ DON'T**



**✗ DON'T**

Don't apply Scrub



Steps & Cleaning agents requirements for Aerator Cleaning.

