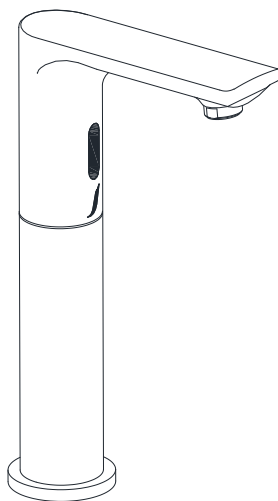




SNR-91017



TEMP.& WATER PRESSURE REQUIREMENTS



Required Pressure: 1~5 bar



Required Temperature: 5-65°C

Note: Above are the recommended values for getting Conventional Output.

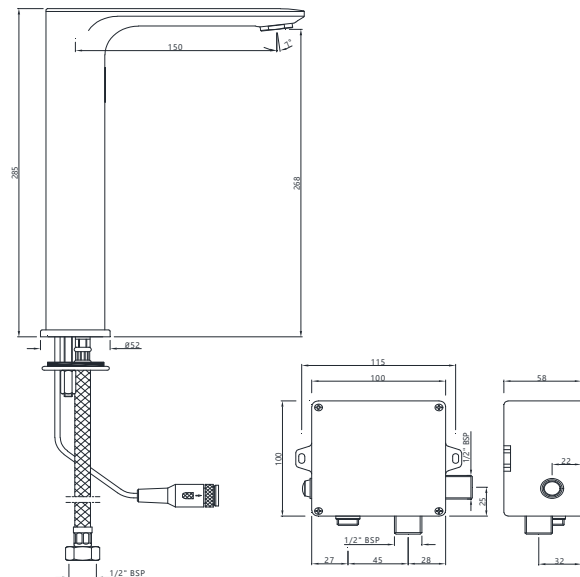
NOTE:

1. Do not install the faucet facing a mirror or any other electronic system operated an infra-red sensor.

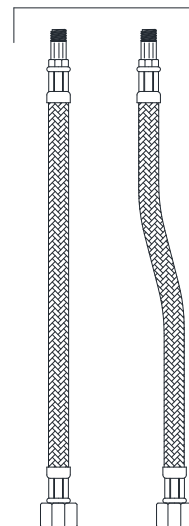
2. To prevent reflection problem, it is recommended to keep a minimum distance of 1.5 meters b/w faucet & Other Items.

3. This product should only be fitted by a qualified/certified plumber and should not installed by a non-qualified person.

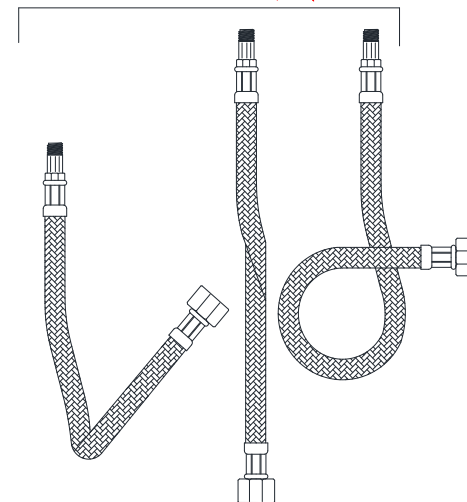
TECHNICAL DRAWING

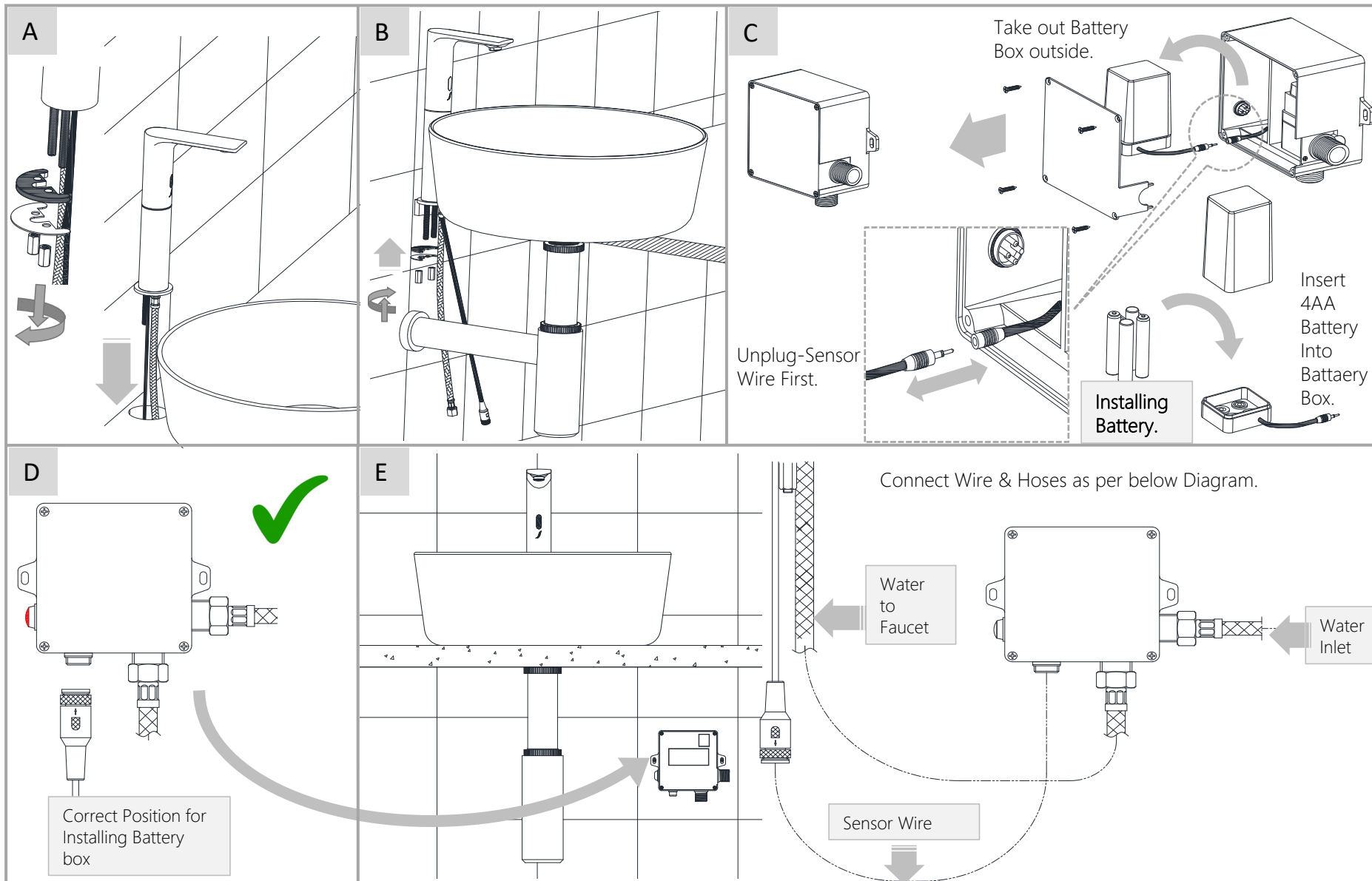


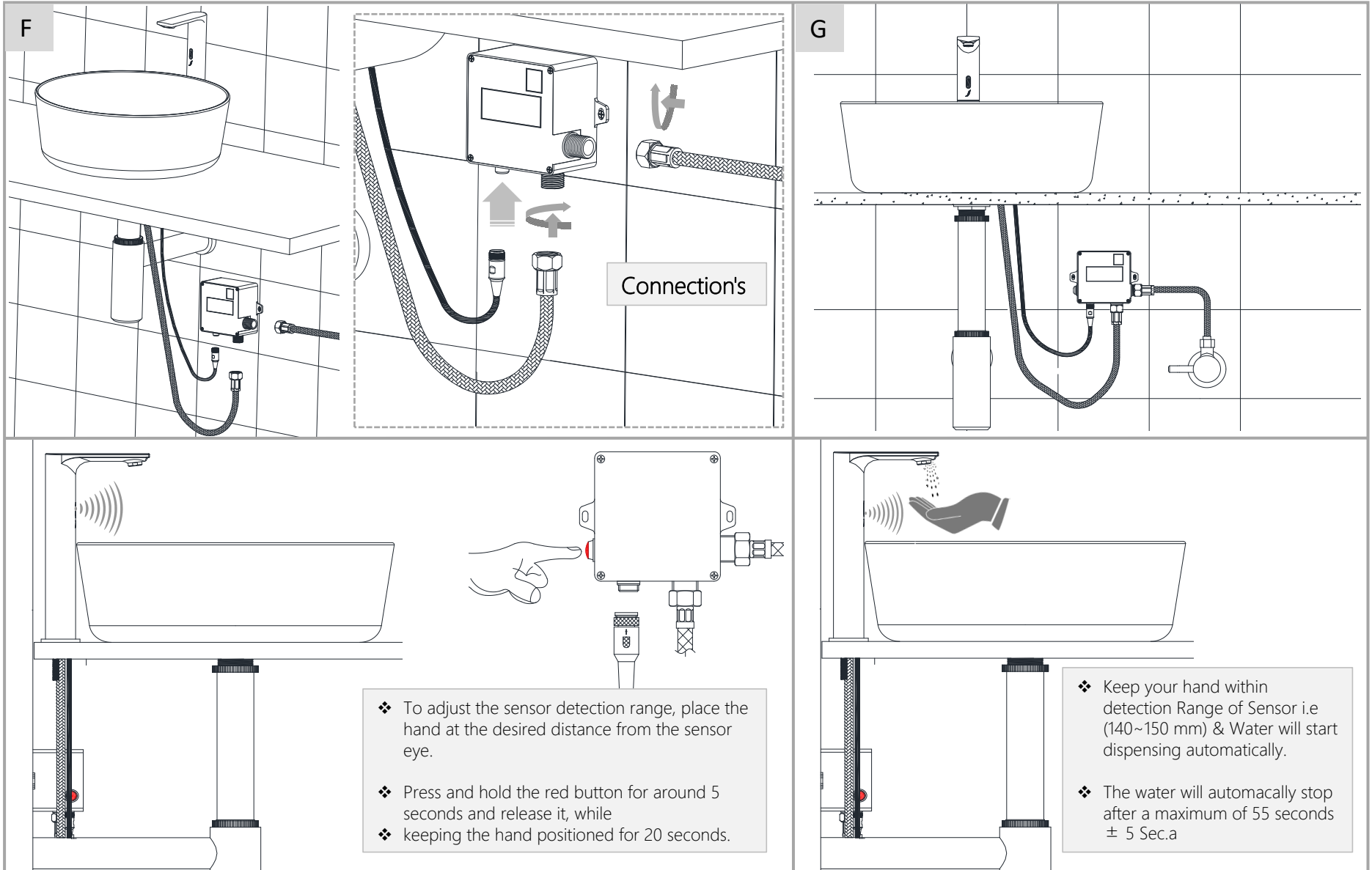
DO ✓



DON'T ✗

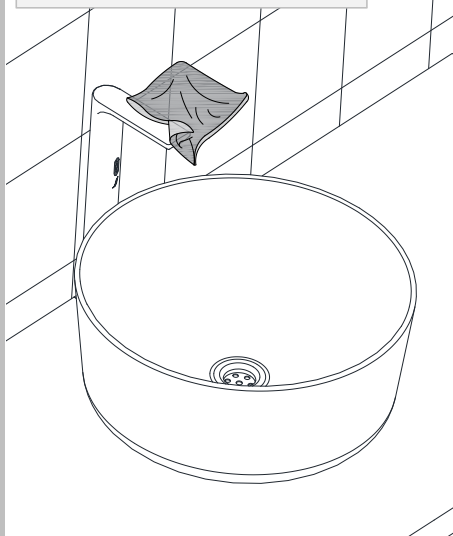




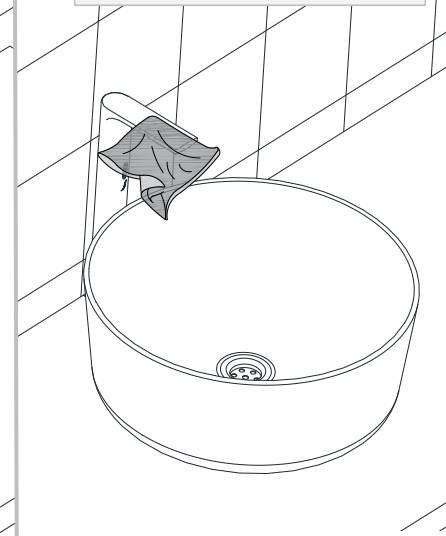




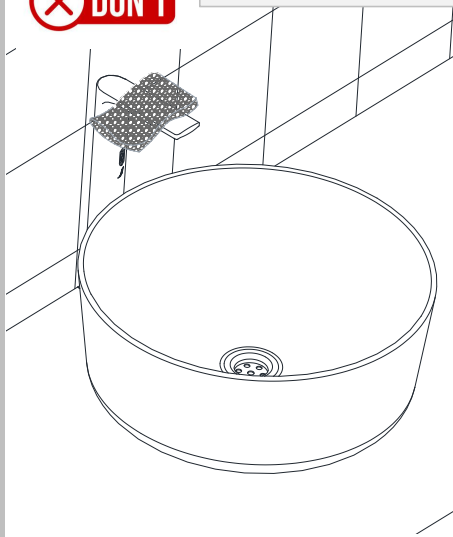
Apply soft cotton cloth



Apply soft cotton cloth



Don't apply Scrub



Steps & Cleaning agents requirements for Aerator Cleaning.

