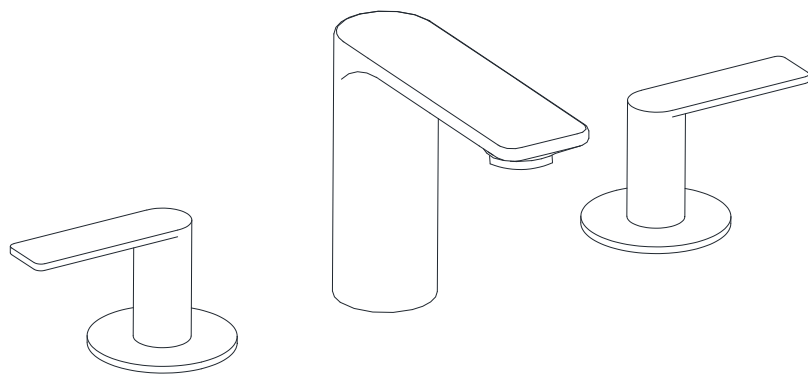




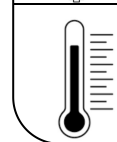
## LAG-91189CSL



## TEMP.&amp; WATER PRESSURE REQUIREMENTS



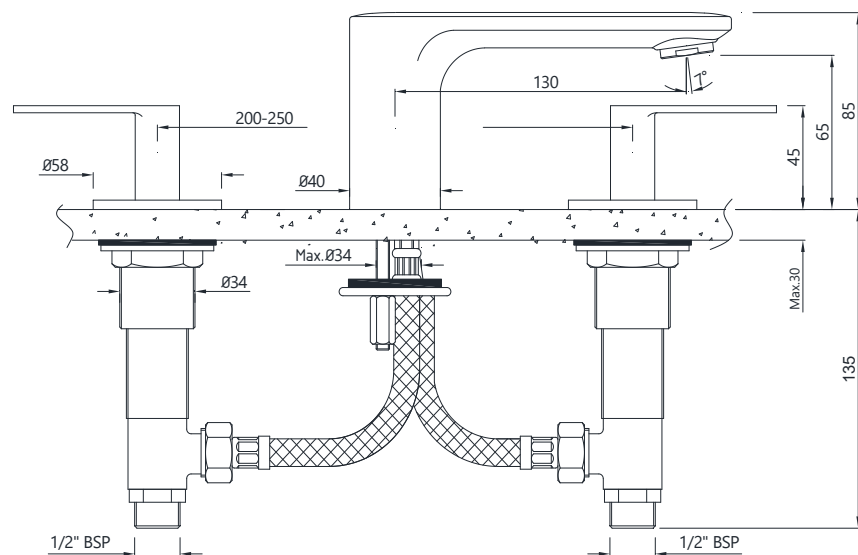
Working Pressure: 1~3 bar



Required Temperature: 5-65°C

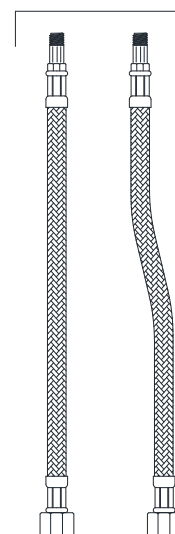
Note: Above values are the recommended values for Getting Conventional Outputs.

## TECHNICAL DRAWING

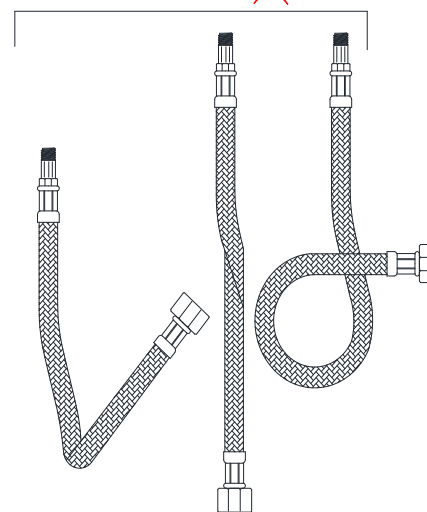


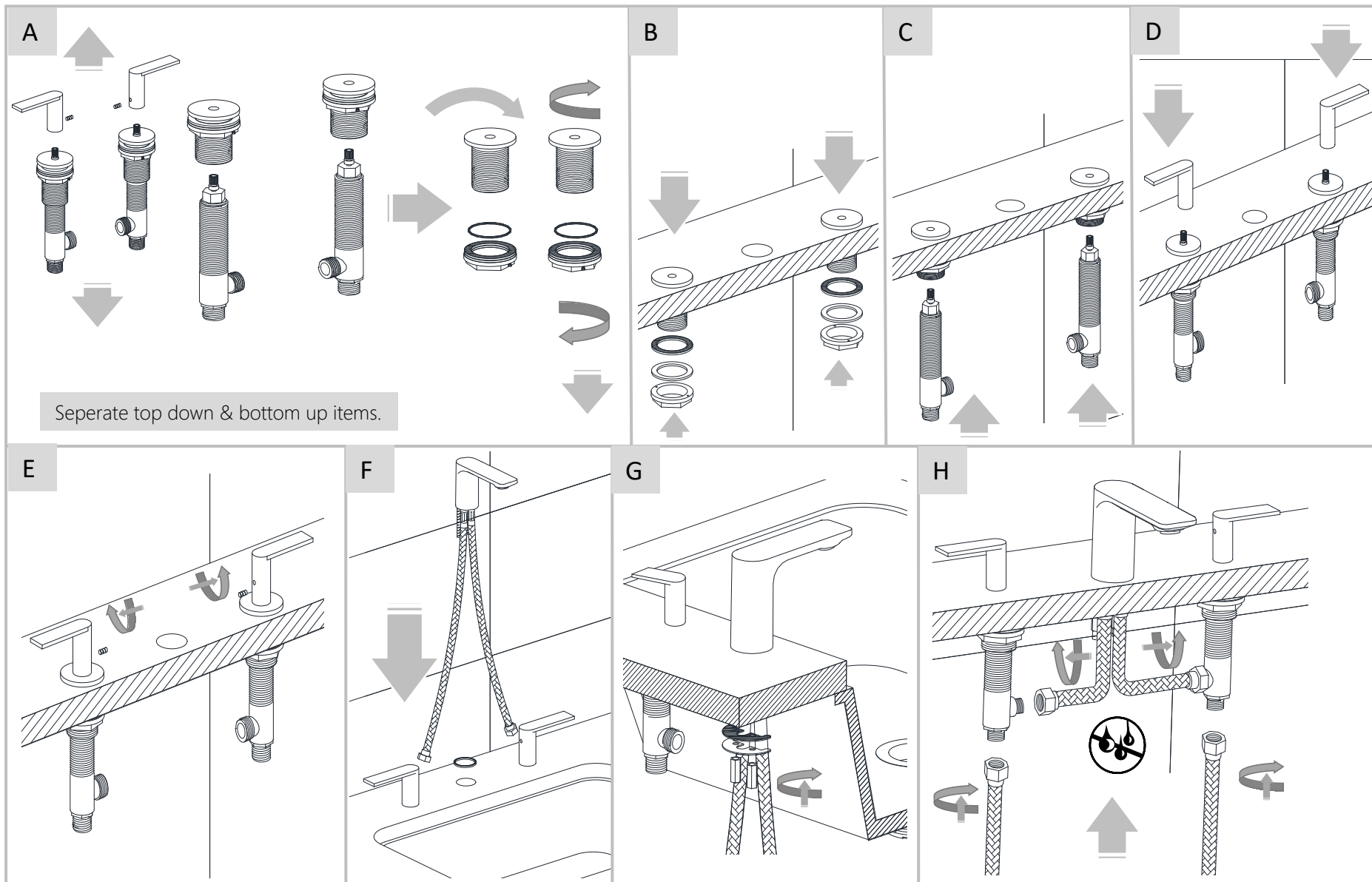
## TAKE CARE DURING CONNECTION'S

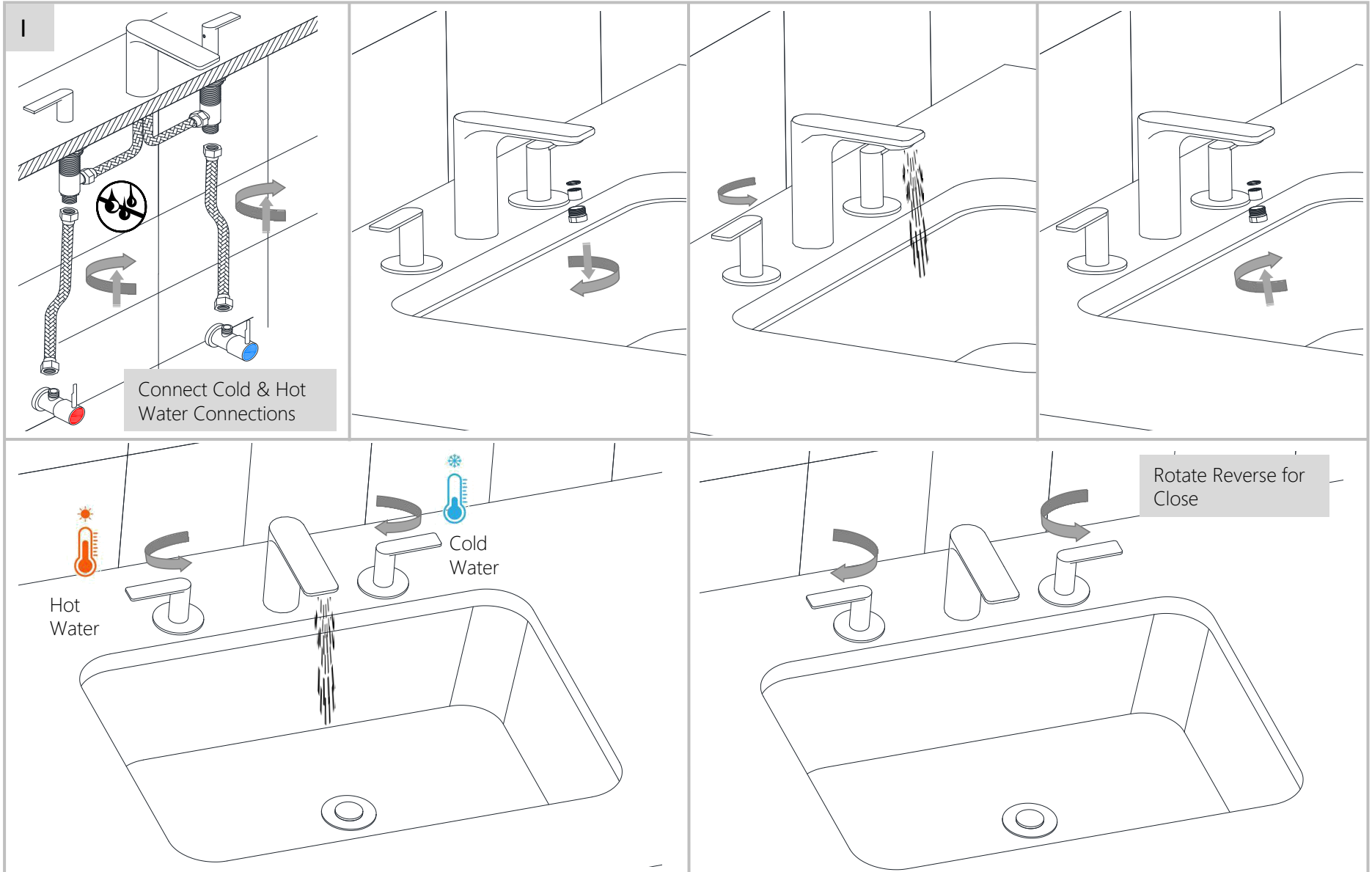
DO ✓



DON'T ✗





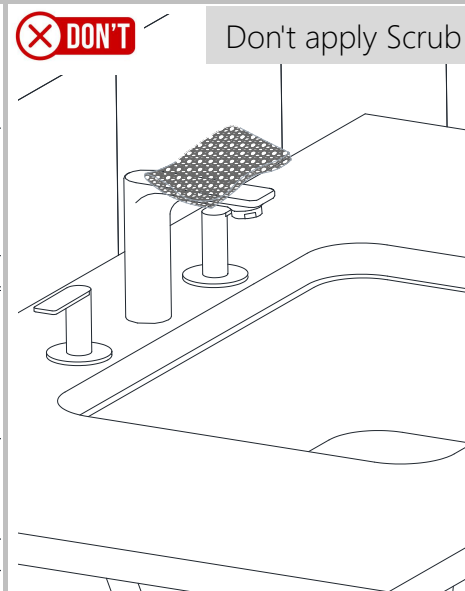
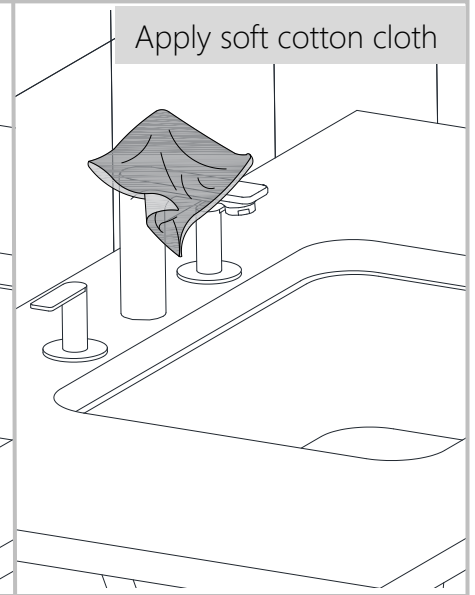




Apply soft cotton cloth



Apply soft cotton cloth



Don't apply Scrub

Steps & Cleaning agents requirements for Aerator Cleaning.

